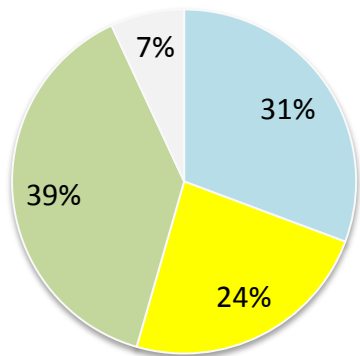
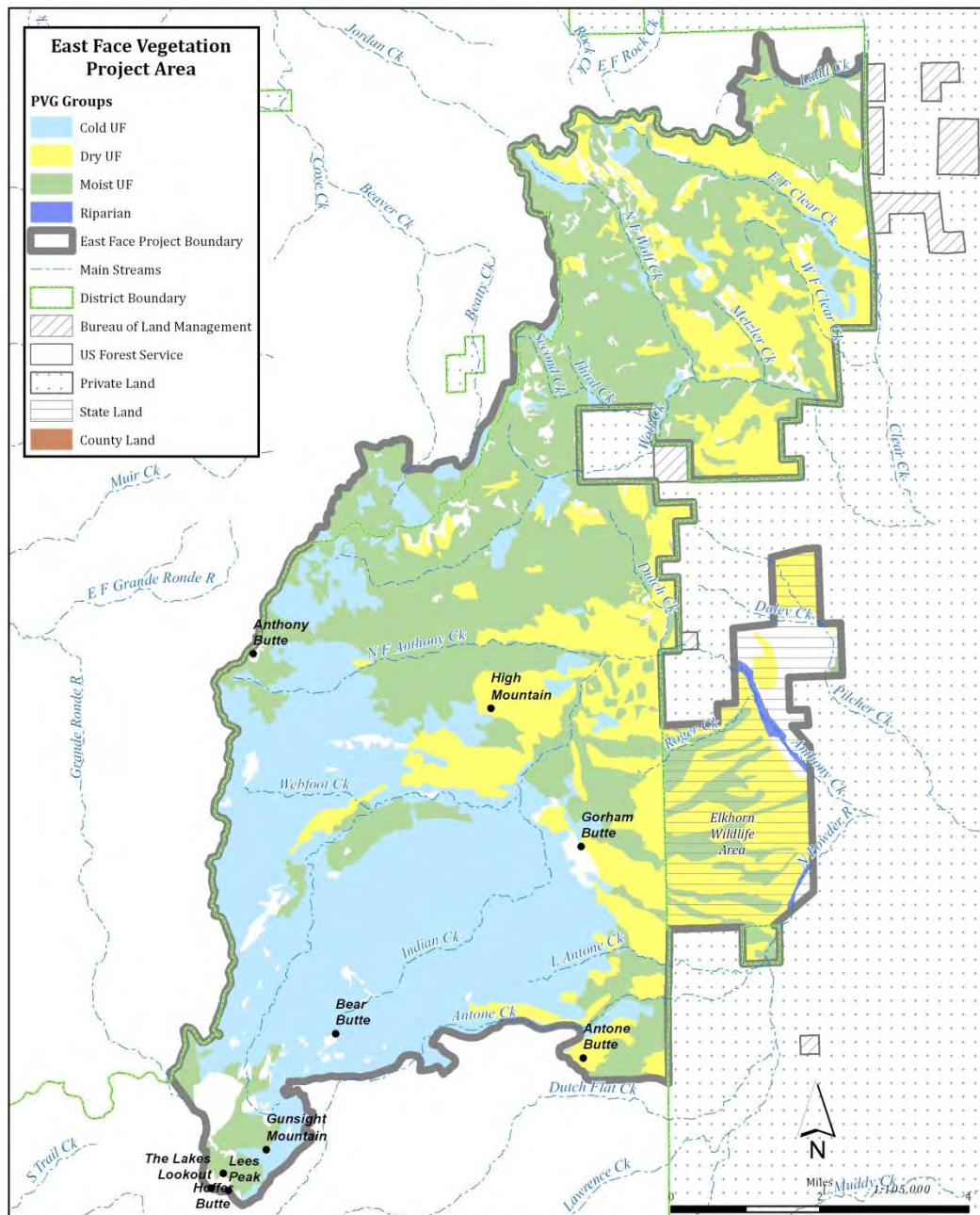


Potential Vegetation Groups

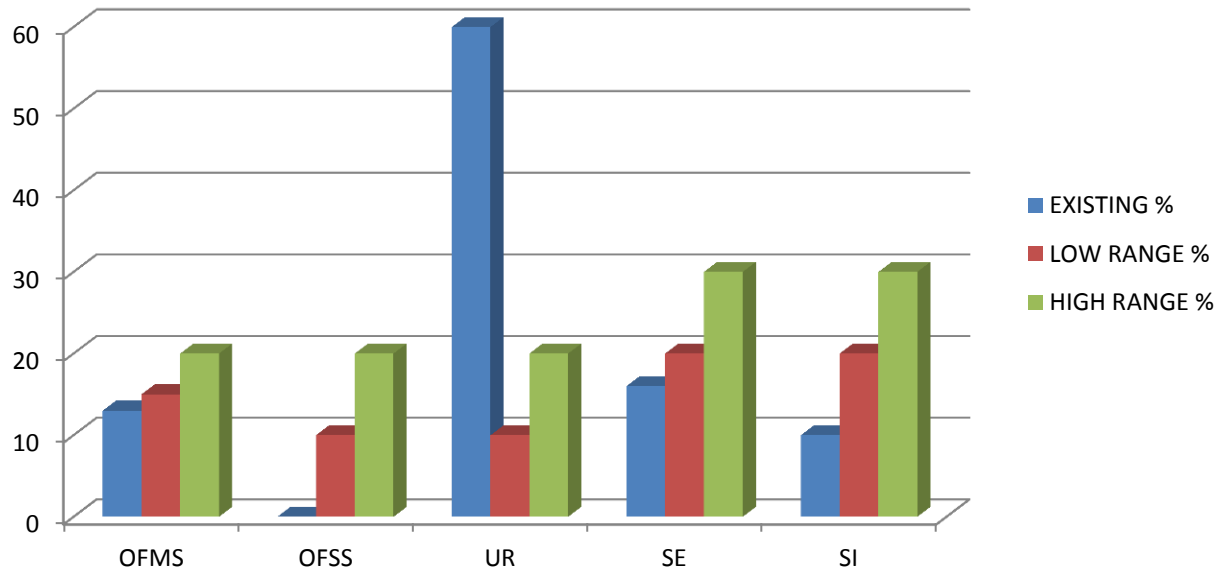


- Cold UF (15,210 ac)
- Dry UF (11,575 ac)
- Moist UF (18,824ac)
- Non Veg



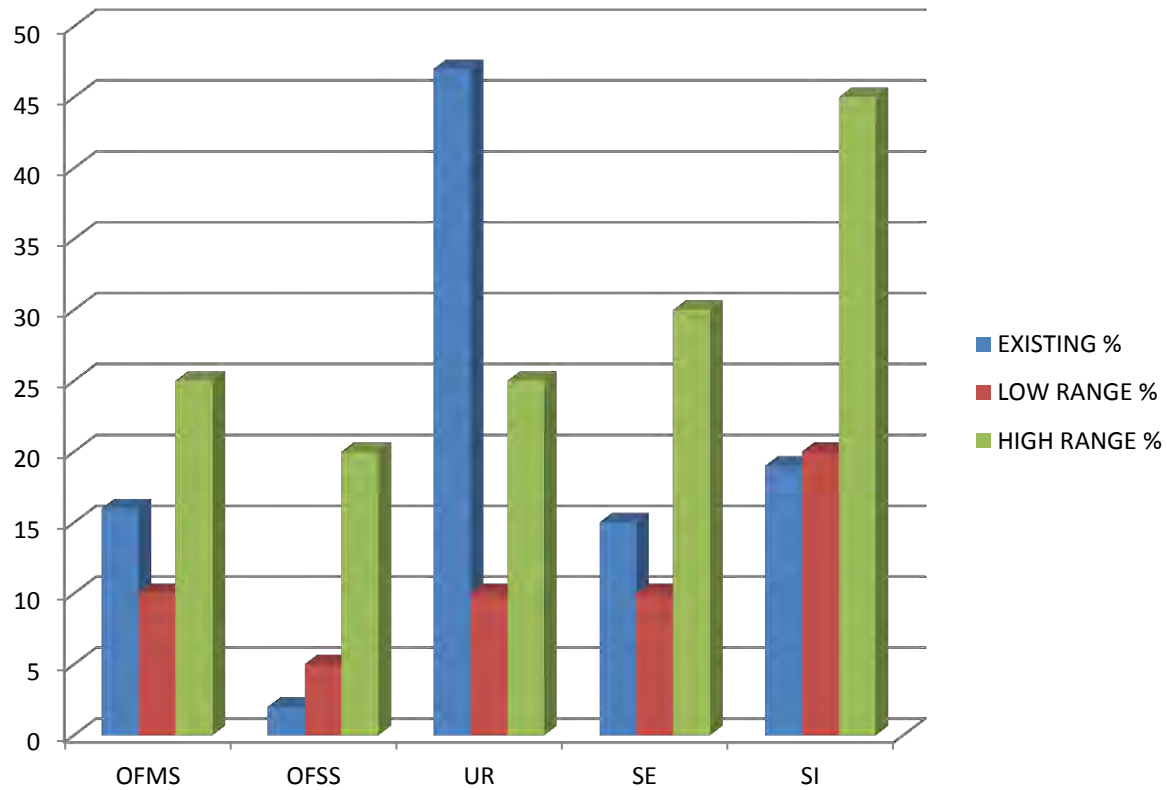
Range of Variability

MOIST UPLAND FOREST 39% PLANNING AREA



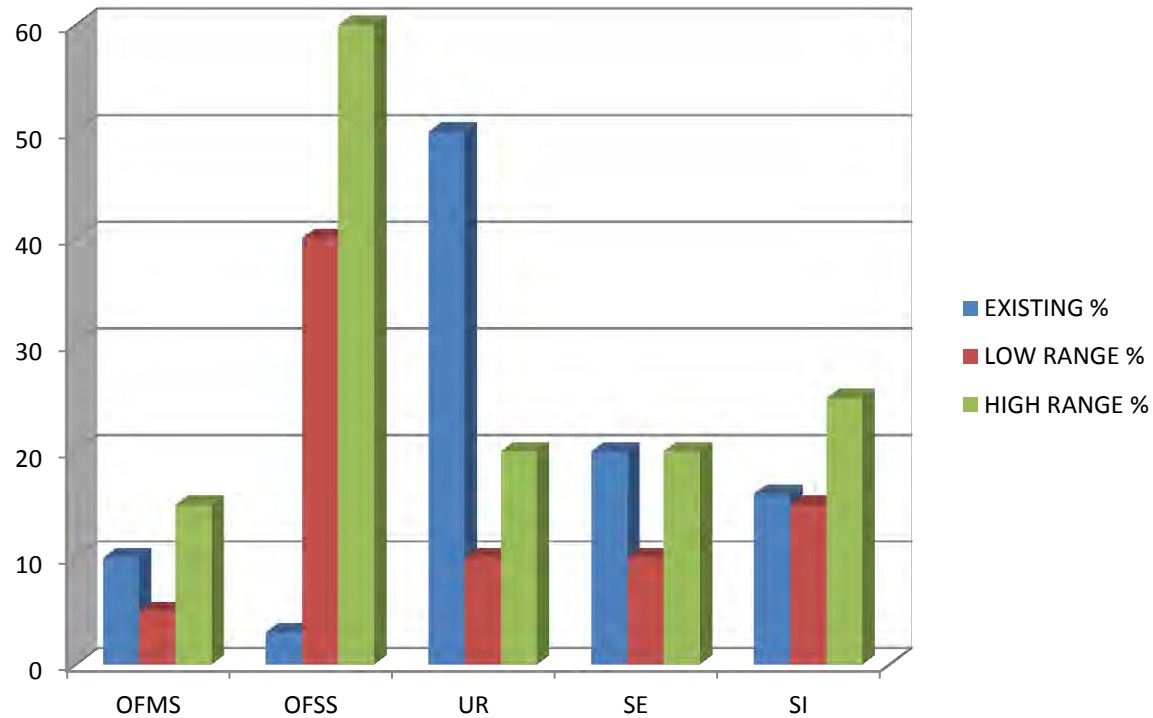
Range of Variability

**COLD UPLAND FOREST
31% PLANNING AREA**



Range of Variability

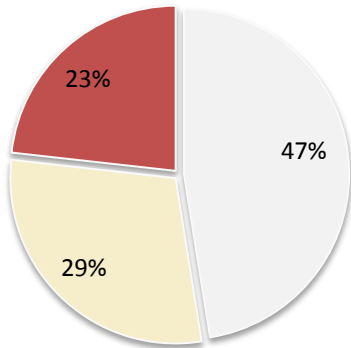
DRY UPLAND FOREST 24% PLANNING AREA



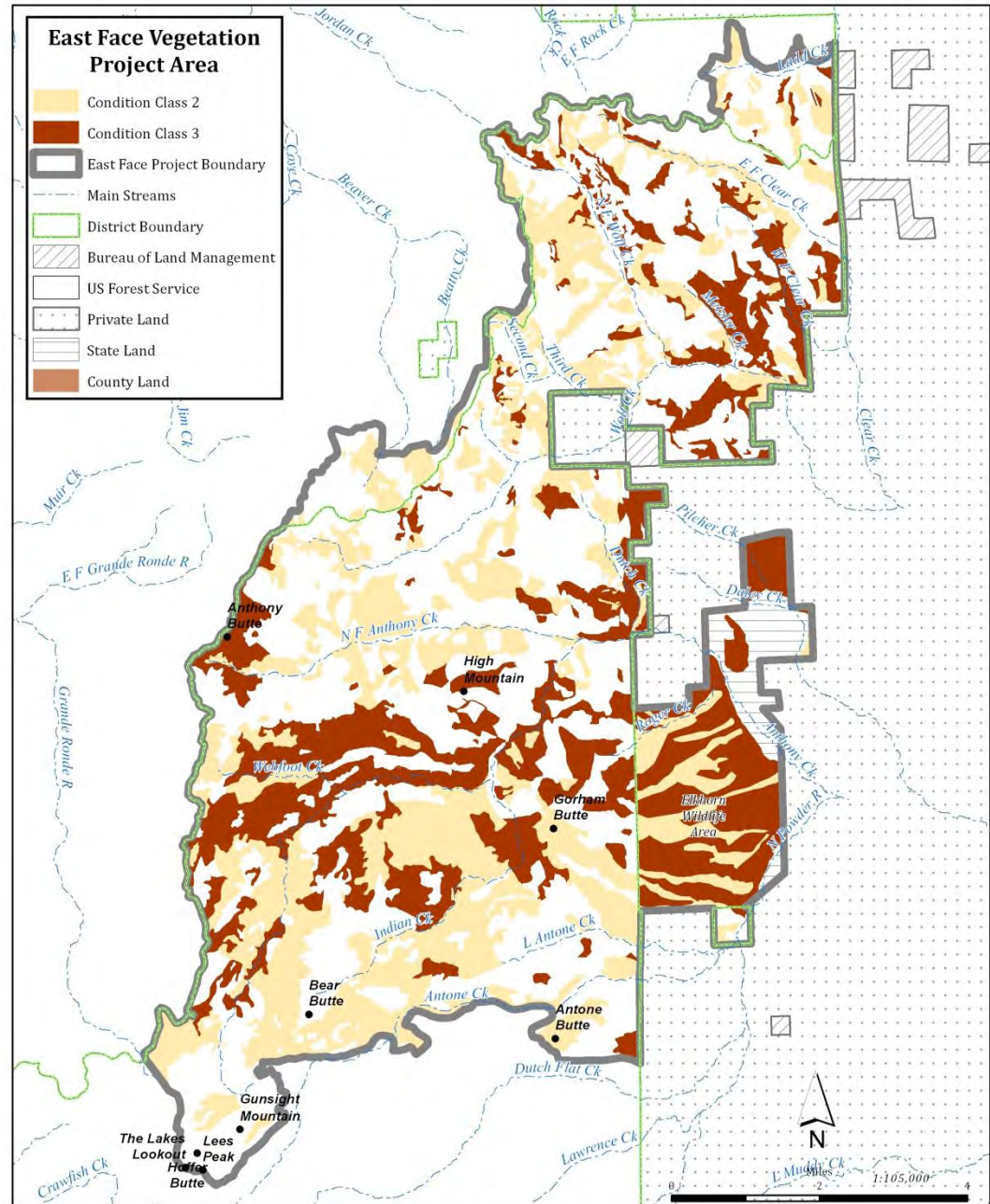
Condition Class

Condition Class	Description
1	<p>Fire regimes are within or near historical ranges, and the risk of losing key ecosystem components is low. Vegetation conditions in terms of species composition and structural stage are in tact and functioning within the historical range.</p>
2	<p>Fire regimes have been moderately altered from their historical range. The risk of losing key ecosystem components is moderate. Fire frequencies have departed from historical frequencies by one or more interval returns (increased or decreased). This results in moderate changes to one or more of the following:</p> <ul style="list-style-type: none">▪ Fire size▪ Intensity and severity, and▪ Landscape patterns <p>Vegetation conditions in terms of species composition and structural stage have been moderately altered from historical conditions.</p>
3	<p>Fire regimes have significantly altered from their historical range. The risk of losing key ecosystem components is high. Fire frequencies have departed from historical frequencies by multiple return intervals. This results in dramatic changes to one or more of the following:</p> <ul style="list-style-type: none">▪ Fire size▪ Intensity and severity, and▪ Landscape patterns <p>Vegetation conditions in terms of species composition and structural stage have been significantly altered from historical conditions.</p>

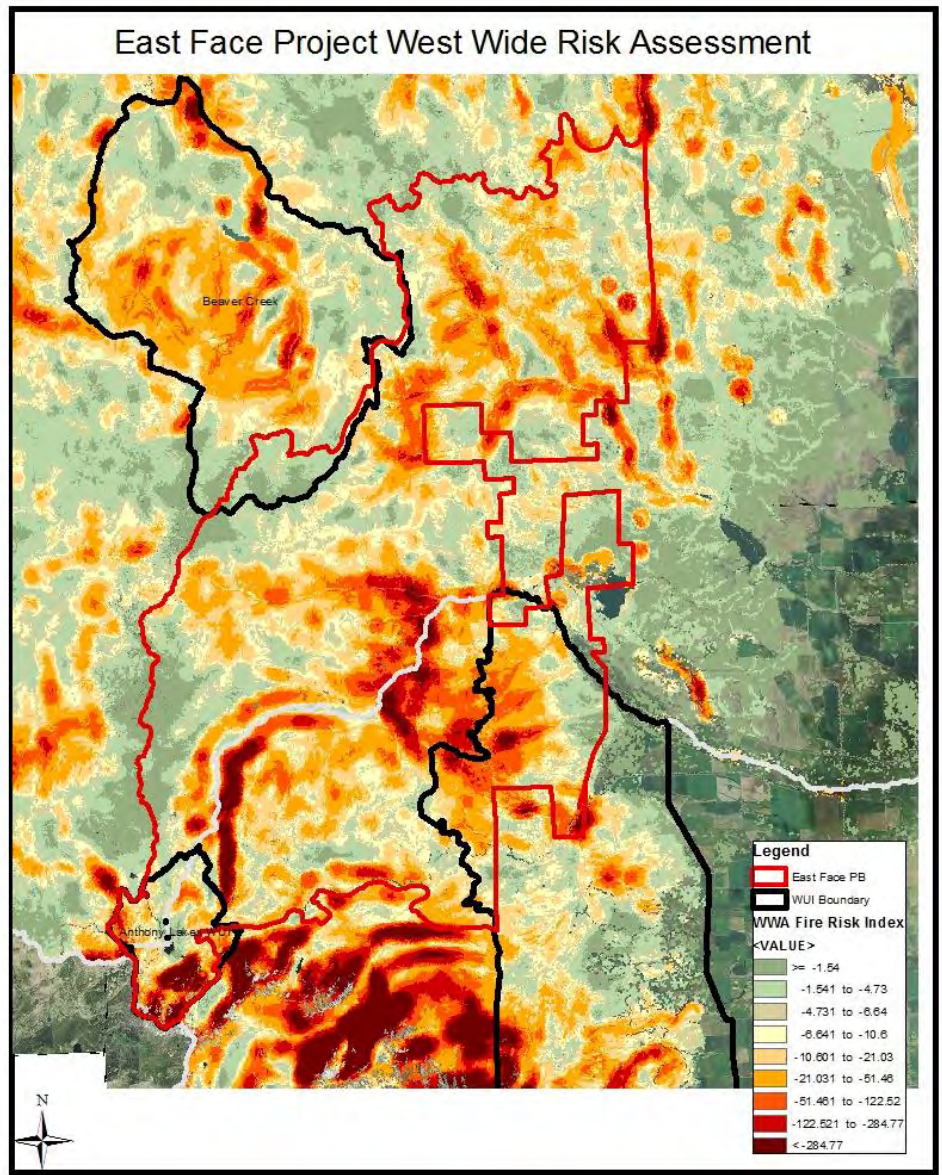
Condition Class 2 & 3 within the project area



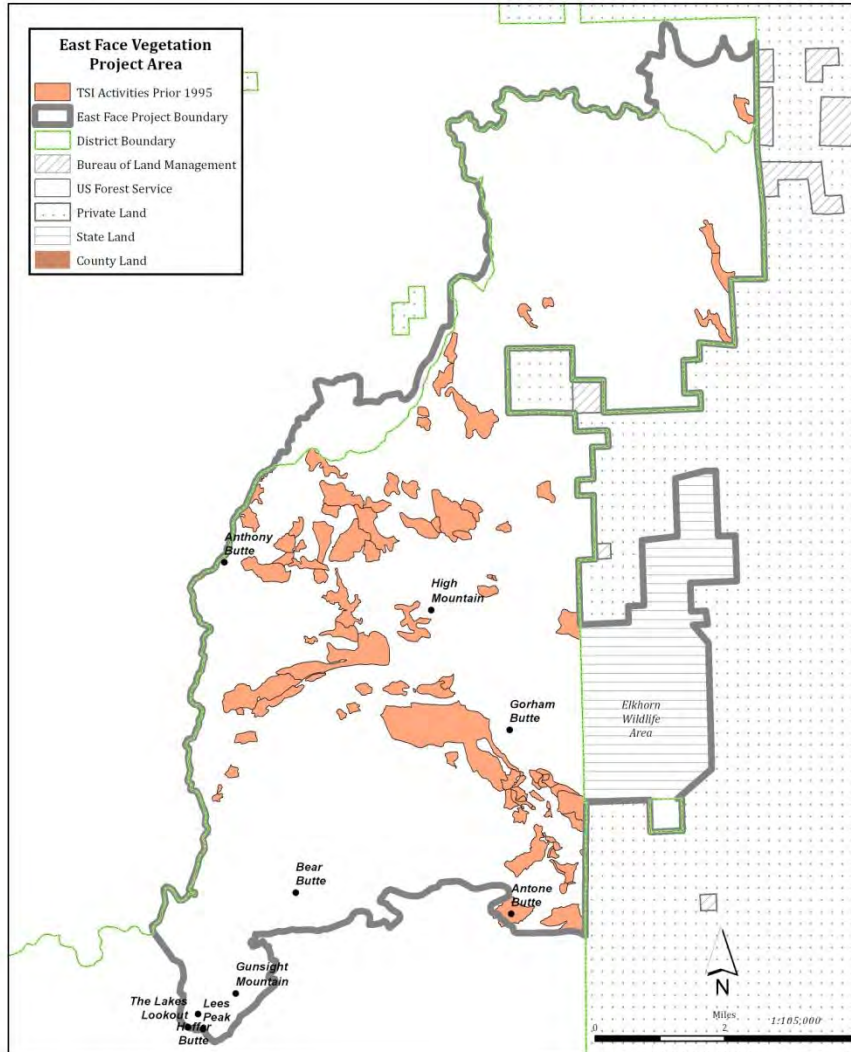
- East Face Project area (48,569 ac)
- Condition Class 2 (14,033 ac)
- Condition Class 3 (11,151 ac)



West-wide Fire Risk Assessment



Young Stand Thinning Opportunities



Social and Economic Considerations

- Contribution to local and regional employment and economies through contract work and commodity outputs
- Important Viewshed - Visual backdrop for Baker and Powder River Valleys
- Recognize and support tribal treaty rights and traditional cultural practices
- Anthony Lakes Recreation Area
- Beaver Creek Municipal Watershed (City of La Grande)
- Close integration with various landowners (especially WUI areas)
- Public and firefighter safety

Preliminary Opportunities

- Reduce fire risk within and adjacent to private lands WUI's
- Enhance public safety/reduce fire risk in the Anthony Lakes Recreation area – WUI fuel reduction, improve safety of escape routes
- Establish strategic landscape fuel breaks to enhance future fire management options and landscape resiliency
- Restoration of dry upland forests to more resilient structures and compositions with a focus on promoting Old Forest Single Stratum
- Provide post-n-pole and firewood gathering areas for public and commercial uses
- Apply forest management activities at scales and intensities consistent with natural disturbance processes to move area towards HRV
- “Young” stand management in past wildfire, TSI and harvest areas
- Treatments to conserve and enhance whitebark pine communities
- Enhance big game forage/browse conditions
- Restoration of riparian hardwood communities